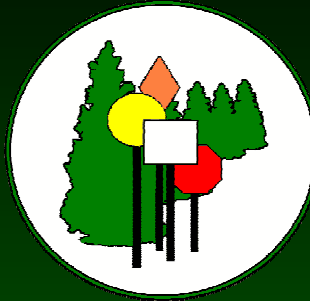


Kent County



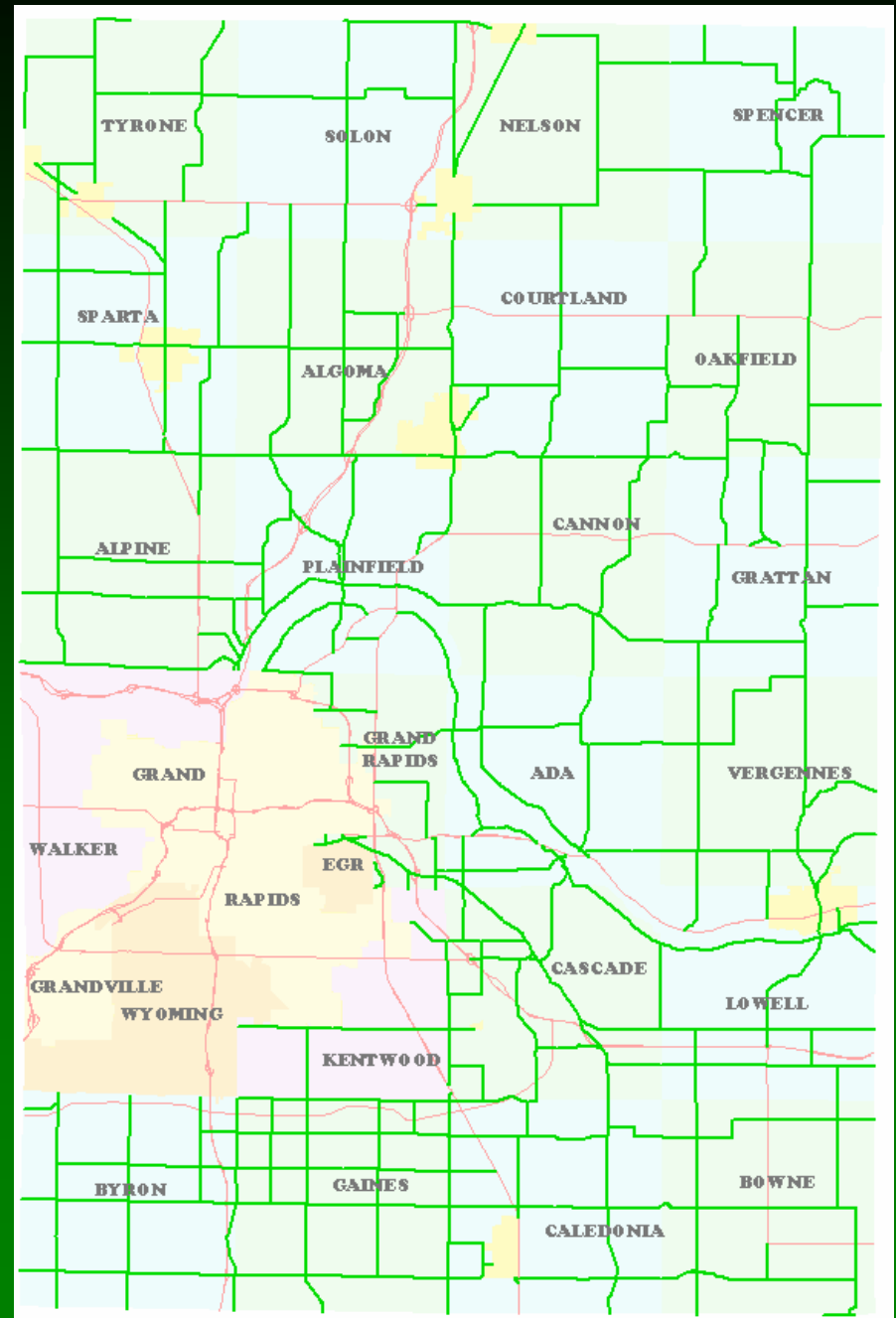
Road Commission

**Long-Range  
Strategic Plan  
for Primary Roads**

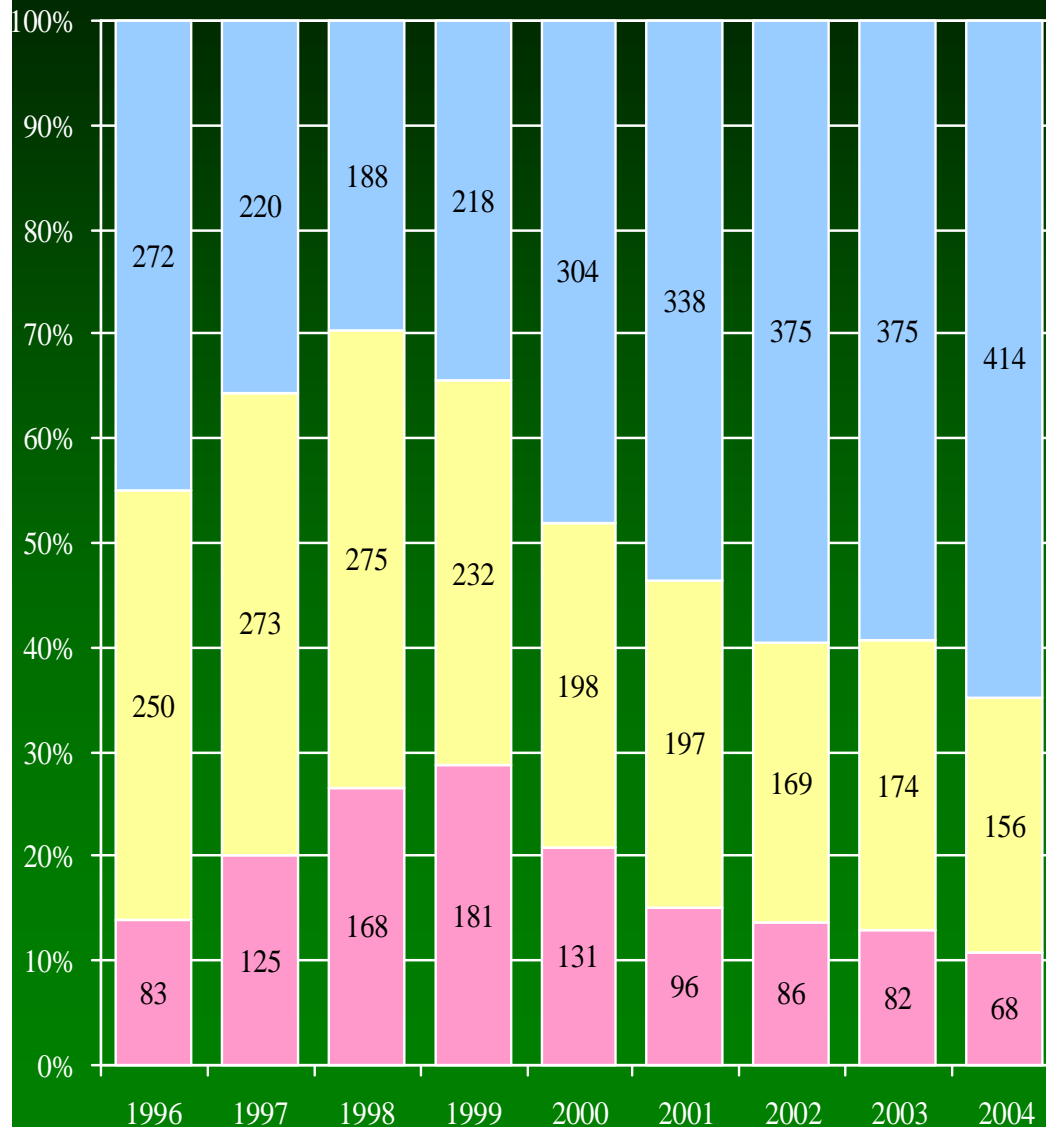
November 2005

# Kent County Primary Roads

- 645 Miles
- 100% Paved
- 238 “All-Season” Miles
- 641 Federal Aid Eligible Miles



# PCI Distribution of Primary Roads 1996 - 2004



Since 1999, road conditions have improved with increased levels of investment in preservation.

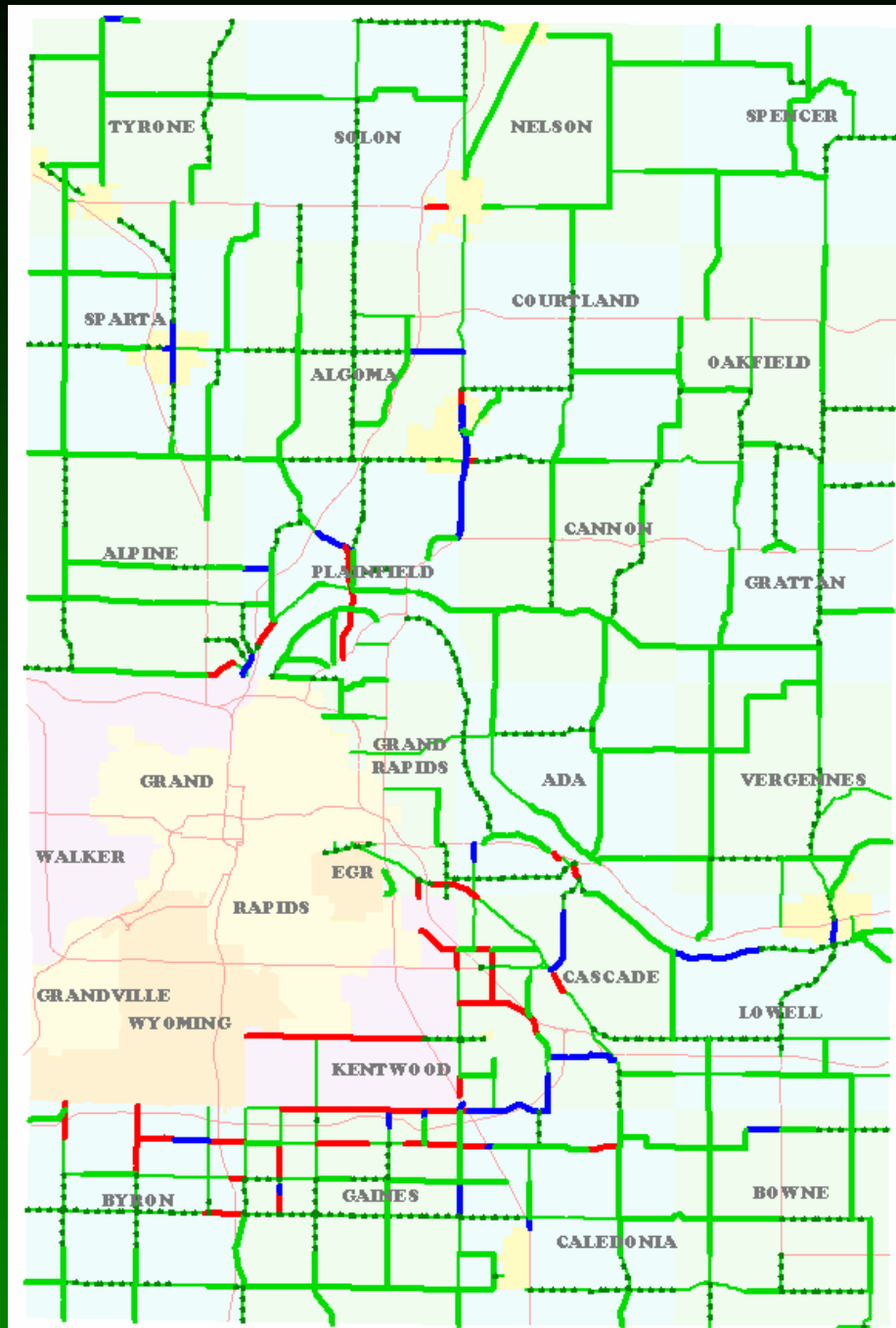
## Average Annual Investment 1995-2004



Expand

Reconstruct

Preserve



## Primary Investments '95 – '05

Widen



39 miles

Reconstruct



27 miles

Resurface/Overlay



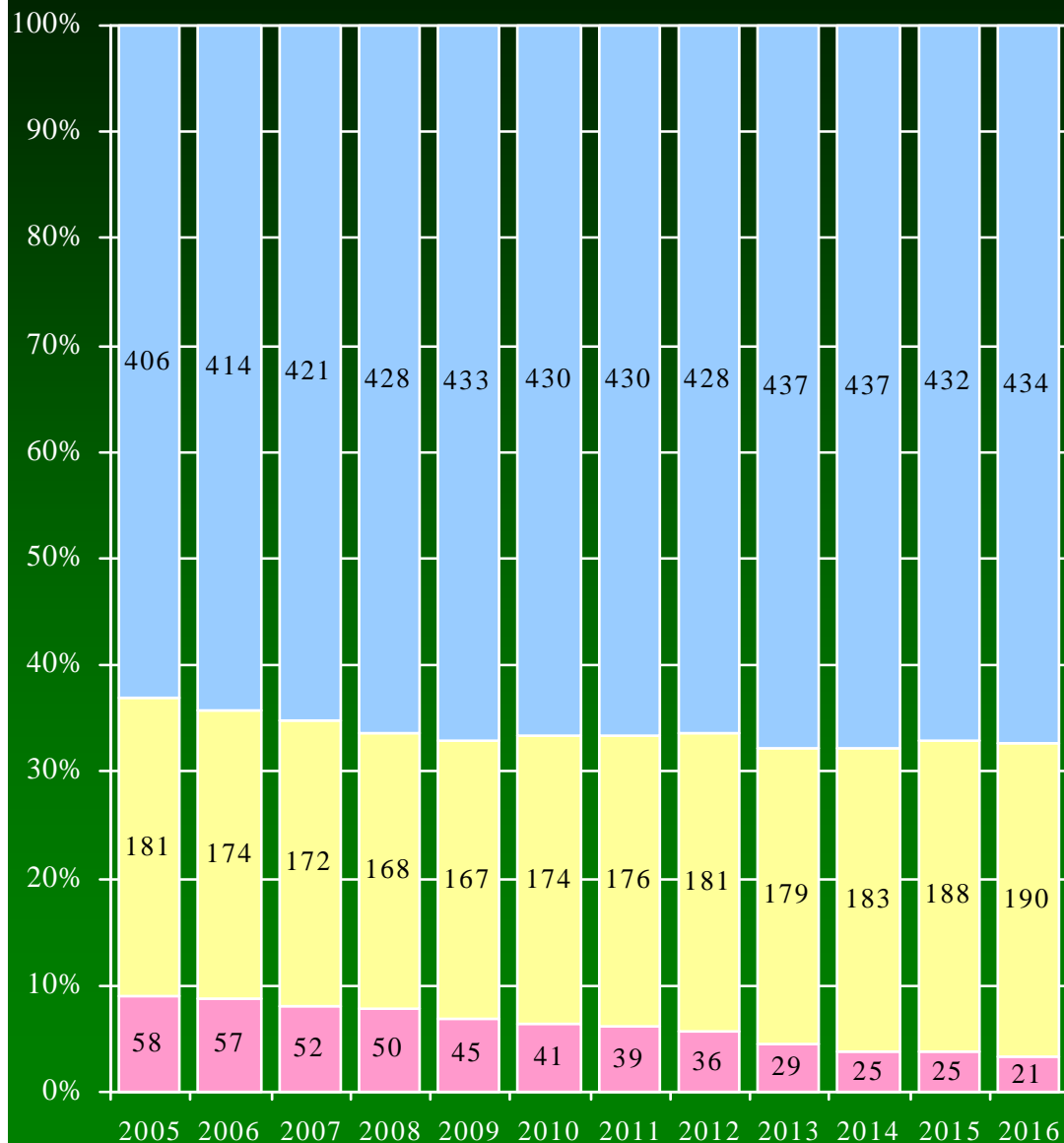
216 miles

Surface Treatment



381 miles

# PCI Distribution of Primary Roads 2005 - 2016



Continued commitment to preservation will stabilize system conditions close to 70% in Good condition through 2016.

## Preservation 2006 - 2016

Resurfacing: 183 Miles

\$26.2 Million

Surface

Treatments: 475 Miles

\$42.0 Million

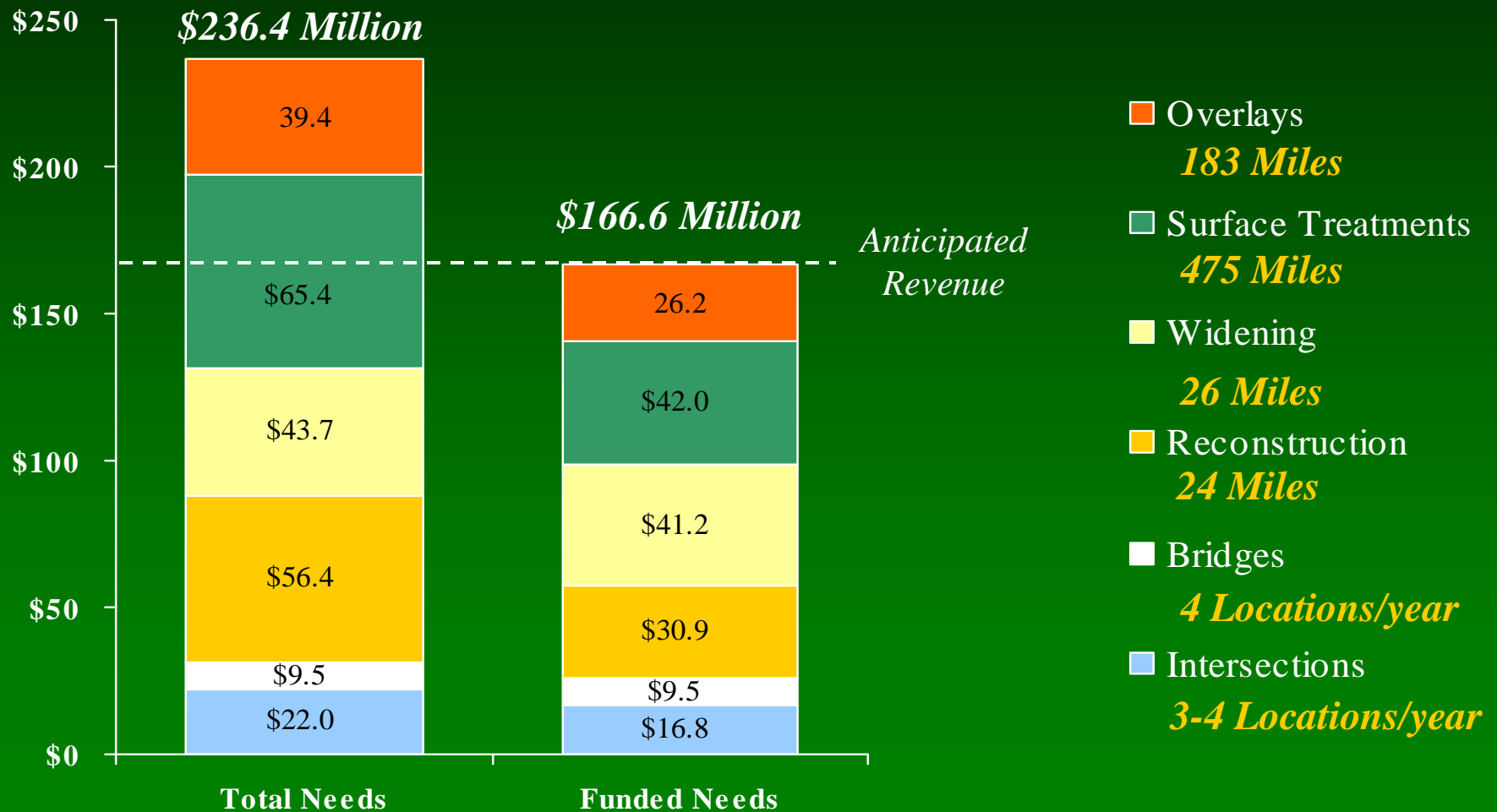
Total

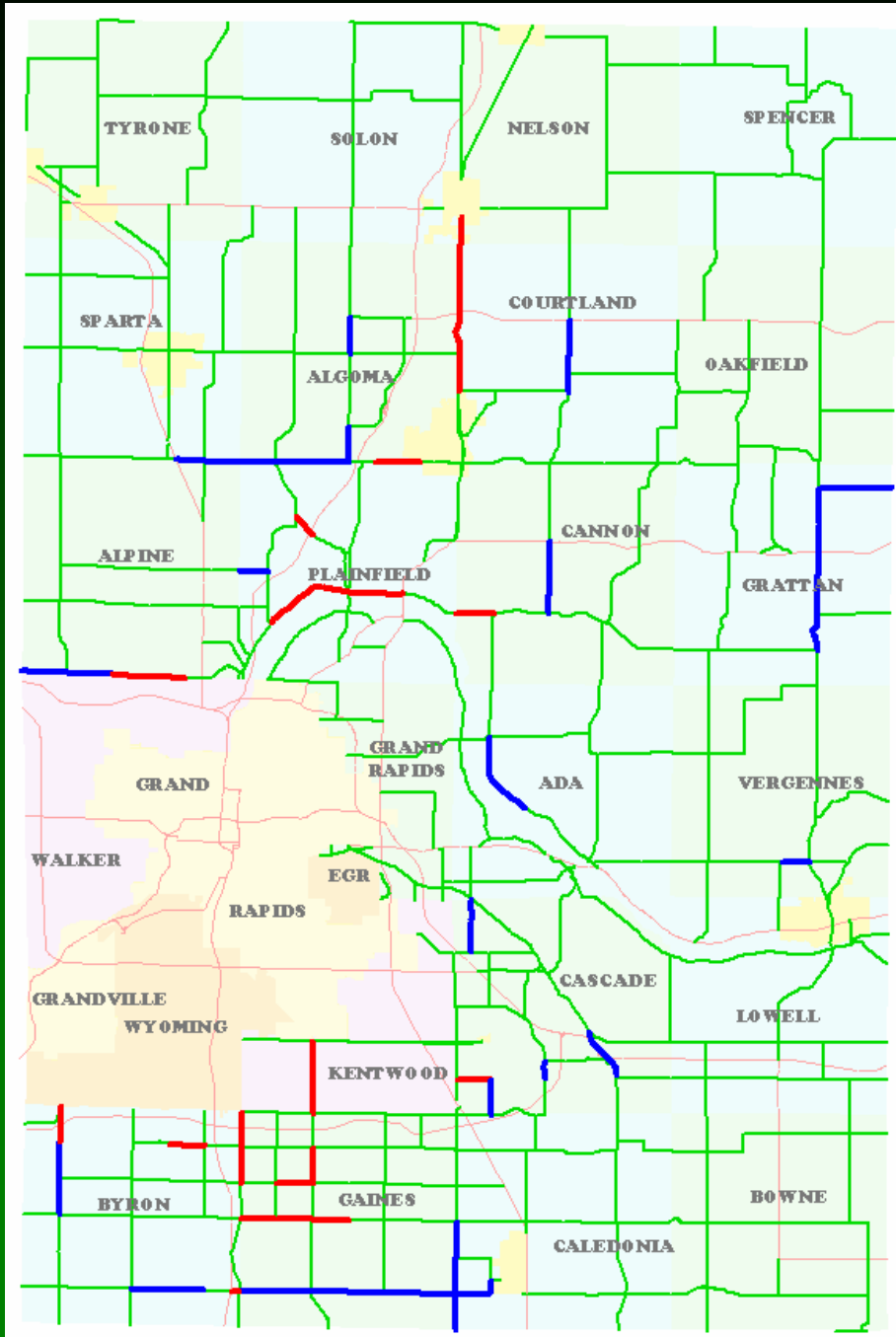
658 Miles

\$68.2 Million

# Planned Investment Strategy

70% System Condition PCI > 70





## Planned Investment Strategy

System Condition  
70% PCI > 70  
(millions)

\$68.2 Preservation

\$41.2 Widening

\$30.9 Reconstruction

\$9.5 Bridges

\$16.8 Intersections

---

\$166.6 Total Investment

# Planned Investment Strategy

## Average Annual Investment 1995-2004



Expand   Reconstruct   Preserve

## Average Annual Investment 2005-2016



Expand   Reconstruct   Preserve